

## Exam: C1234 - Enter Your Exam Name Here

Instructor: Examiner Name

Response rate: 9/20

Last action: 2.4.2020

### Table of contents

1. Evaluation of questions
2. Exam report
3. Summary report + Question analysis
4. Table of scores

# 1. Evaluation of questions

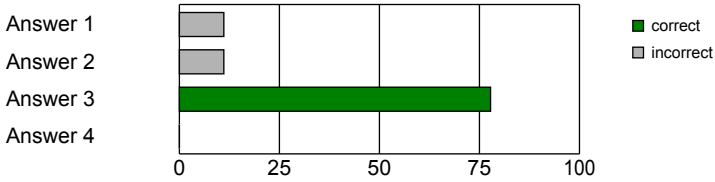
## 2. Biology

### Question 2.1 [Achievable scores: 1]

The genetic material in human mitochondria is arranged as

- Answer 1 [Scores: 0/0] Linear chromosomes
- Answer 2 [Scores: 0/0] Circular plasmids
- Answer 3 [Scores: 1/0] Circular chromosomes
- Answer 4 [Scores: 0/0] Inner membranes

Valid answers: 9 of 9



Answer	Scores	n	%
1	0/0	1	11
2	0/0	1	11
3	1/0	7	78
4	0/0	0	0

Difficulty: 0.78

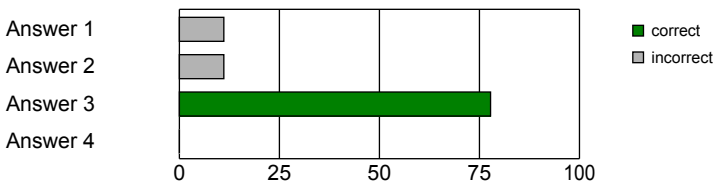
Discrimination: 0.63

### Question 2.2 [Achievable scores: 1]

The diagram represents part of a protein molecule. Which of the following identifies bonds X and Y?

- Answer 1 [Scores: 0/0] X: Hydrogen Y: Peptide
- Answer 2 [Scores: 0/0] X: Hydrogen Y: Hydrogen
- Answer 3 [Scores: 1/0] X: Peptide Y: Hydrogen
- Answer 4 [Scores: 0/0] X: Peptide Y: Peptide

Valid answers: 9 of 9



Answer	Scores	n	%
1	0/0	1	11
2	0/0	1	11
3	1/0	7	78
4	0/0	0	0

Difficulty: 0.78

Discrimination: 0.63

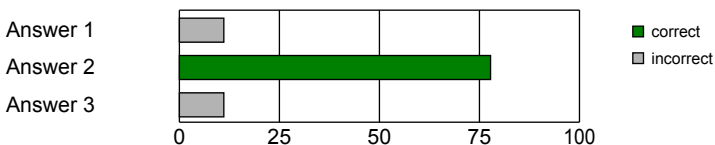
## 3. Marketing

### Question 3.1 [Achievable scores: 1]

Refer to the graph below. Which points on the graph are points of consumer equilibrium? (select all that apply)

- Answer 1 [Scores: 0/0] Point i
- Answer 2 [Scores: 1/0] Point e
- Answer 3 [Scores: 0/0] Point j

Valid answers: 9 of 9



Answer	Scores	n	%
1	0/0	1	11
2	1/0	7	78
3	0/0	1	11

Difficulty: 0.78

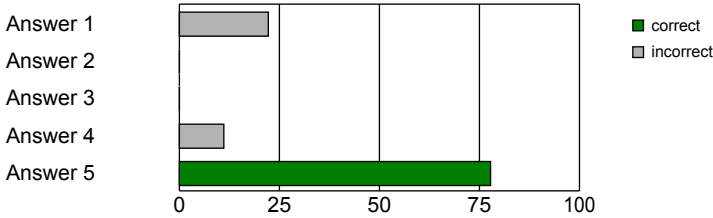
Discrimination: 0.41

**Question 3.2 [Achievable scores: 1]**

Refer to the graph below. Select which points represent a consumer surplus in the perfectly competitive case (select all that apply)

- Answer 1 [Scores: 0/0] Point a
- Answer 2 [Scores: 0/0] Point b
- Answer 3 [Scores: 0/0] Point c
- Answer 4 [Scores: 0/0] Point d
- Answer 5 [Scores: 1/0] Point e

Valid answers: 9 of 9



Answer	Scores	n	%
1	0/0	2	22
2	0/0	0	0
3	0/0	0	0
4	0/0	1	11
5	1/0	7	78

Difficulty: 0.78  
Discrimination: 0.41

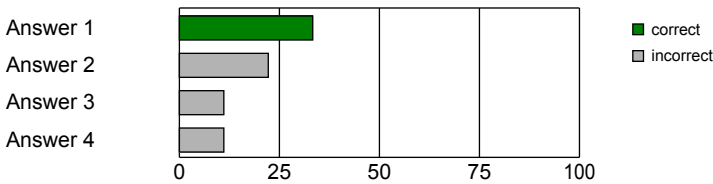
**4. Mathematics**

**Question 4.1 [Achievable scores: 1]**

Simplify

- Answer 1 [Scores: 1/0] -1
- Answer 2 [Scores: 0/0] i
- Answer 3 [Scores: 0/0] 1
- Answer 4 [Scores: 0/0] -i

Valid answers: 9 of 9



Answer	Scores	n	%
1	1/0	3	33
2	0/0	2	22
3	0/0	1	11
4	0/0	1	11

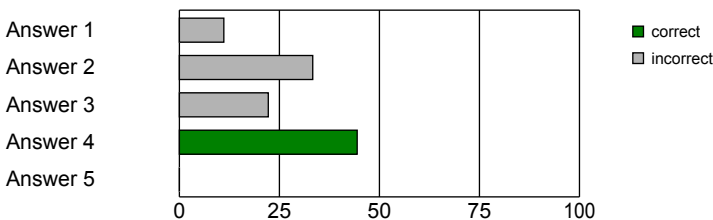
Difficulty: 0.33  
Discrimination: 0.21

**Question 4.2 [Achievable scores: 1]**

Expand and simplify the following

- Answer 1 [Scores: 0/0]  $100x^2$
- Answer 2 [Scores: 0/0]  $4x^2 - 25$
- Answer 3 [Scores: 0/0]  $4x^2 + 25$
- Answer 4 [Scores: 1/0]  $4x^2 - 20x + 25$
- Answer 5 [Scores: 0/0]  $4x^2 + 20x + 25$

Valid answers: 9 of 9



Answer	Scores	n	%
1	0/0	1	11
2	0/0	3	33
3	0/0	2	22
4	1/0	4	44
5	0/0	0	0

Difficulty: 0.44  
Discrimination: 0.35

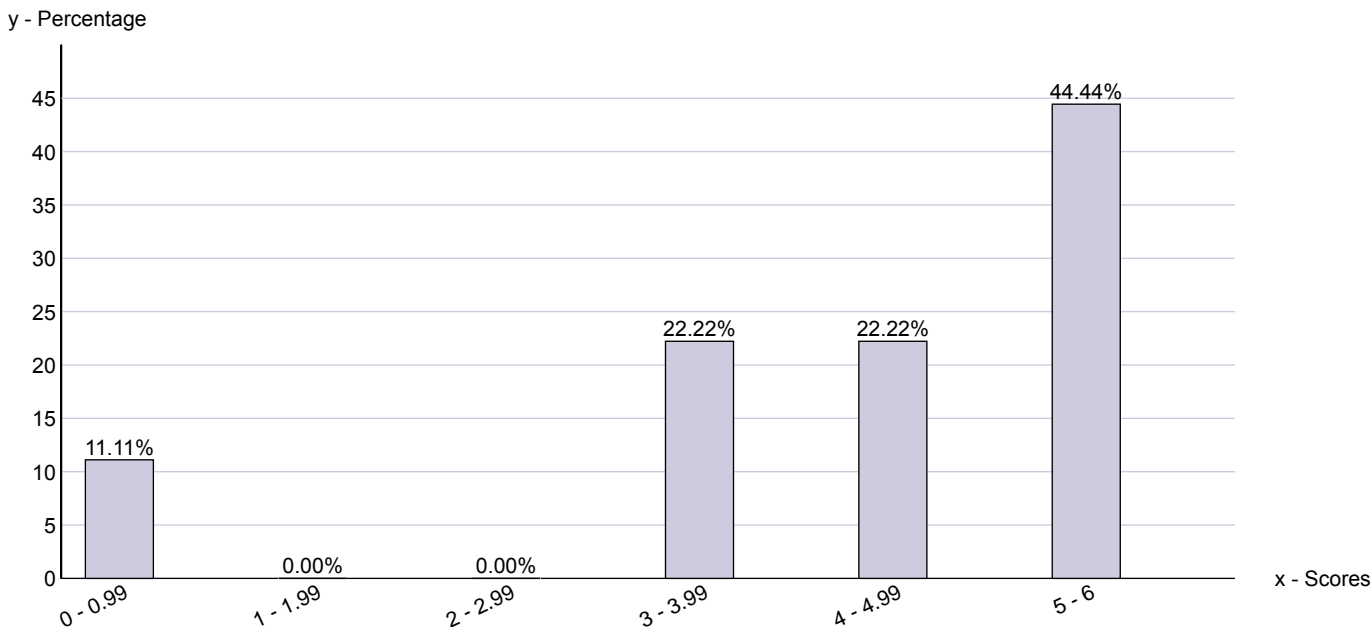
## 2. Exam report

Participant ID	Questionnaire	Question 2.1	Question 2.2	Question 3.1	Question 3.2	Question 4.1	Question 4.2	Total
111111	1	1	1	1	1	0	1	5
222222	2	1	0	1	1	0	0	3
333333	3	0	0	0	0	0	0	0
444444	4	1	1	1	0	1	0	4
555555	5	0	1	1	1	0	0	3
666666	6	1	1	0	1	0	1	4
777777	7	1	1	1	1	1	1	6
888888	8	1	1	1	1	0	1	5
999999	9	1	1	1	1	1	0	5
Average		0.8	0.8	0.8	0.8	0.3	0.4	3.9

### 3. Summary report + Question analysis

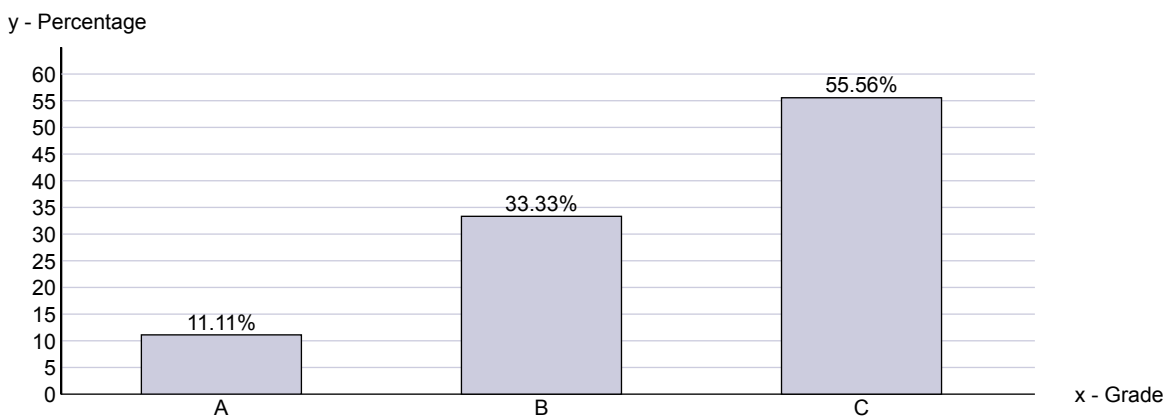
#### Score distribution

Participants	Achievable score	Average score	Max. score	Min. score	Median (50%)	Standard deviation
9	6.00	3.89	6.00	0.00	4.00	1.76



#### Grade distribution

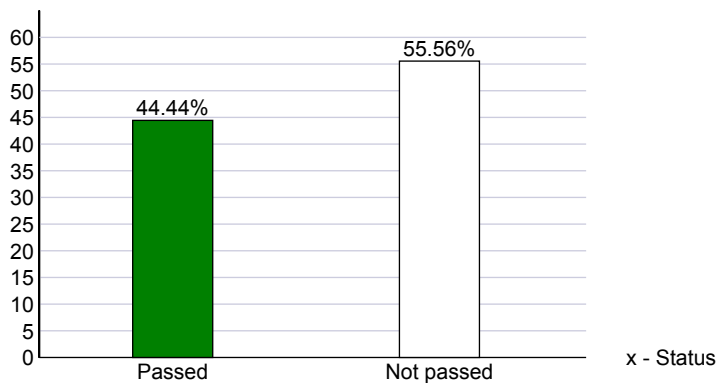
Grade	Score range	Participants	Percentage
A	5.10 - 6.00 (85.00%)	1	11.11%
B	4.20 - 5.09 (70.00%)	3	33.33%
C	0.00 - 4.19 (0.00%)	5	55.56%



#### Passed quote

Status	Participants	Percentage
Passed	4	44.44%
Not passed	5	55.56%
Total	9	100.00%

y - Percentage



### Question analysis

	Question type	Difficulty	Discrimination
Question 2.1	Multiple Choice	0.78	0.63
Question 2.2	Multiple Choice	0.78	0.63
Question 3.1	Multiple Choice	0.78	0.41
Question 3.2	Multiple Choice	0.78	0.41
Question 4.1	Multiple Choice	0.33	0.21
Question 4.2	Multiple Choice	0.44	0.35

## 4. Table of scores - C1234 - Enter Your Exam Name Here

Participant ID	Score	Grade	Passed
111111	5	B	Yes
222222	3	C	No
333333	0	C	No
444444	4	C	No
555555	3	C	No
666666	4	C	No
777777	6	A	Yes
888888	5	B	Yes
999999	5	B	Yes